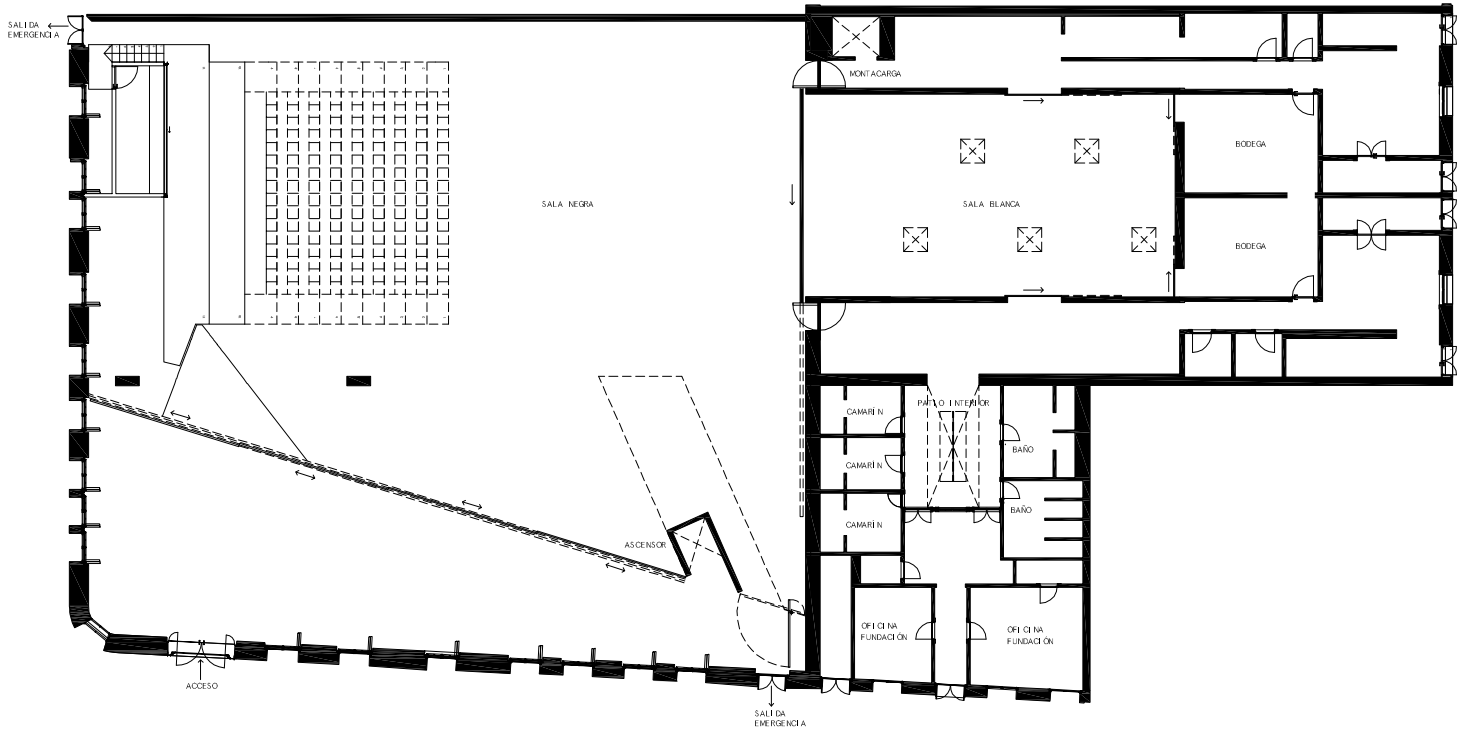
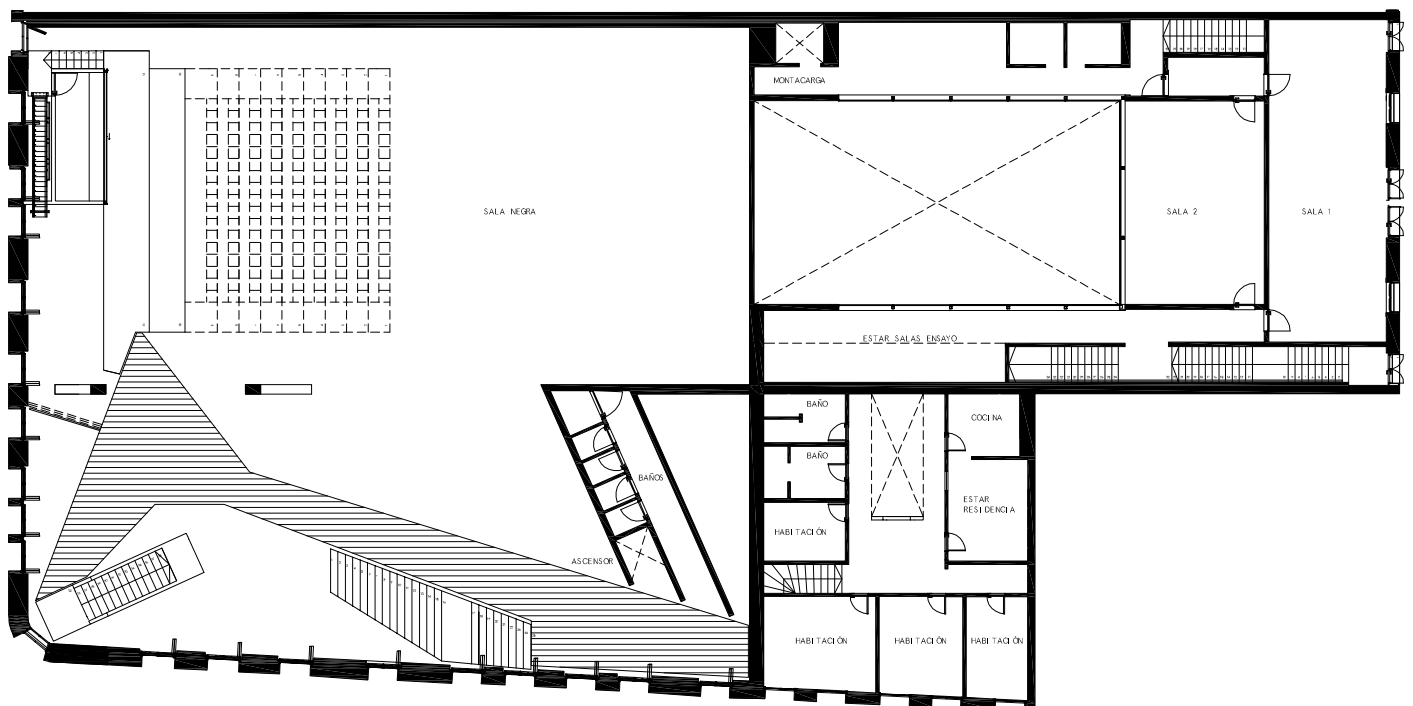


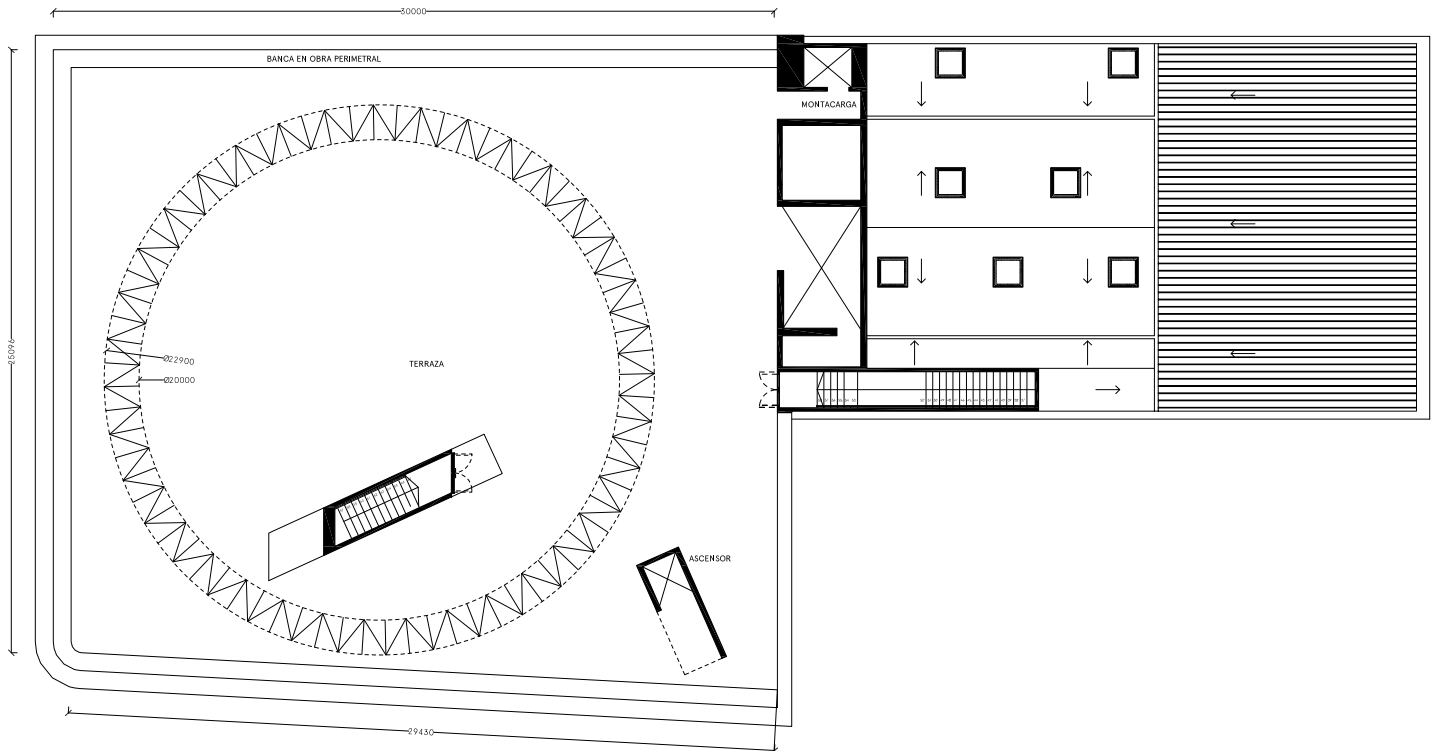
Nivel 01

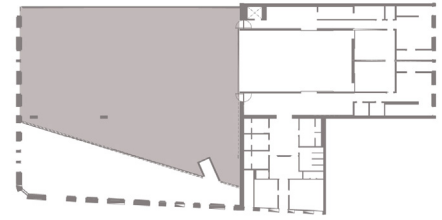


Nivel 02



Nivel 03





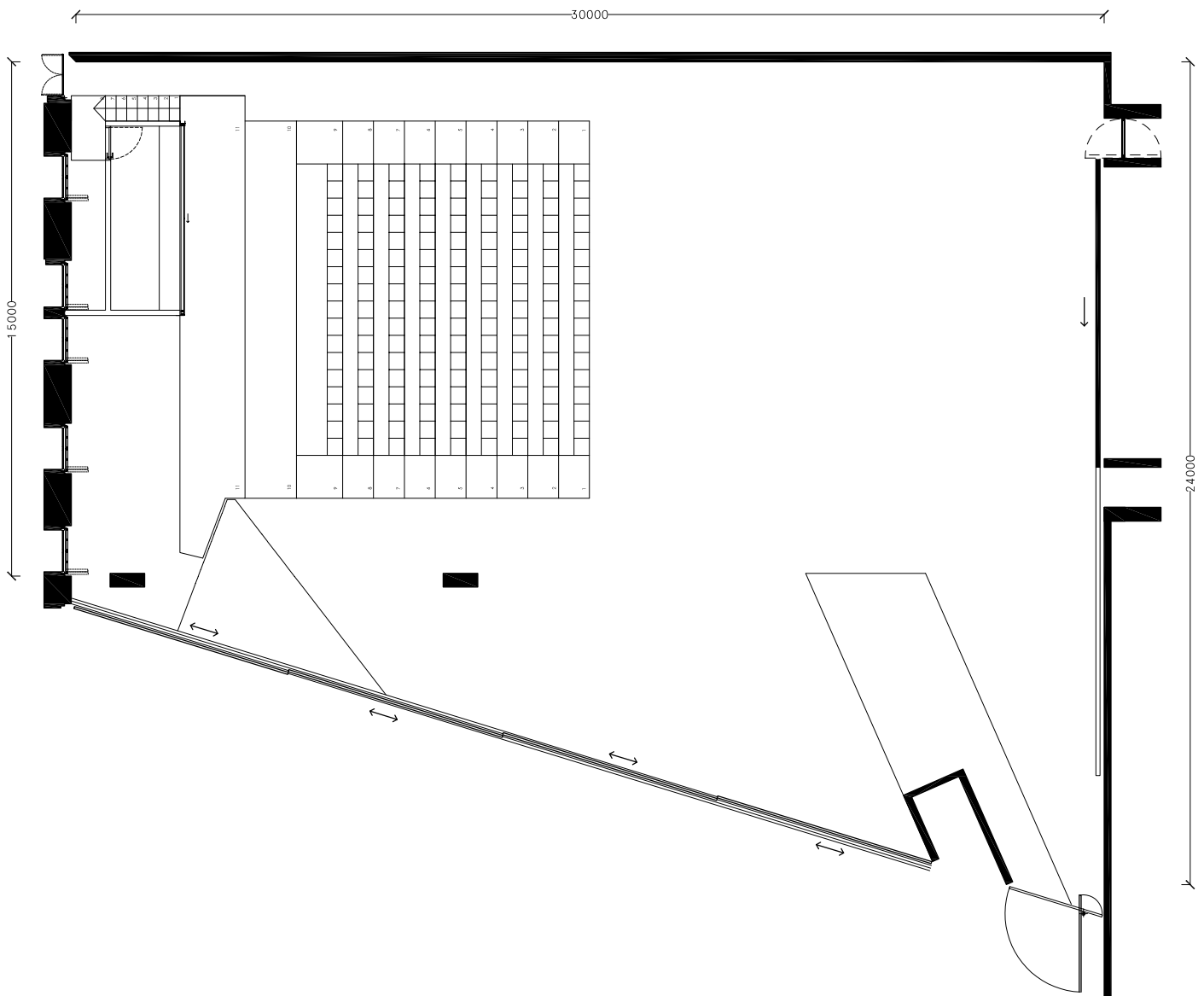
Sala Negra

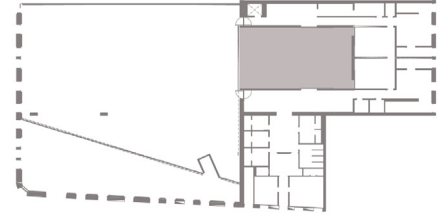
Piso de radier con posibilidad de piso de danza desmontable

Gradería retráctil con capacidad para 170 personas

Capacidad para 500 personas de pie

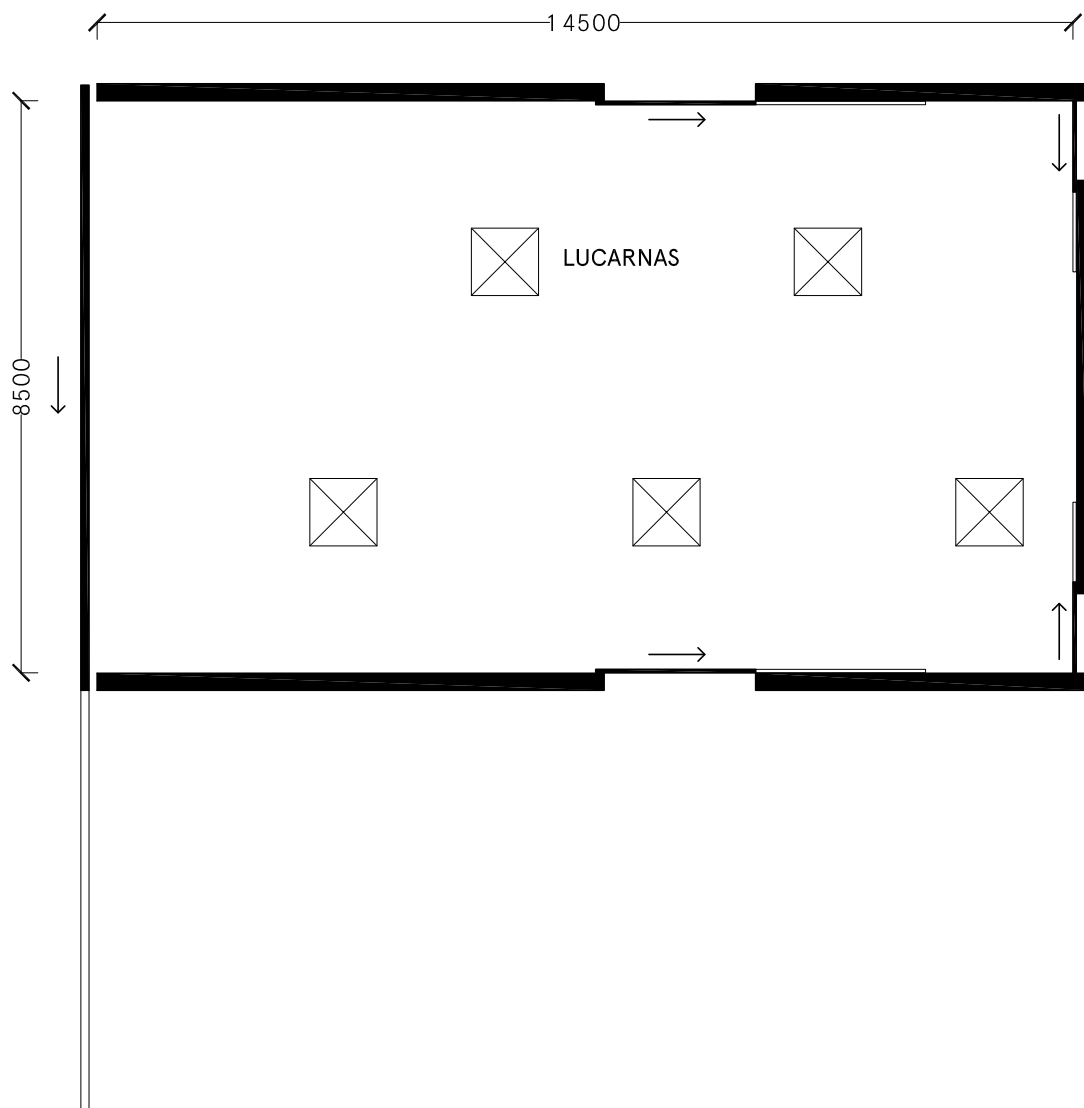
Altura 8,40 mts.

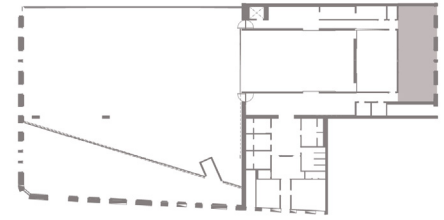




Sala Blanca

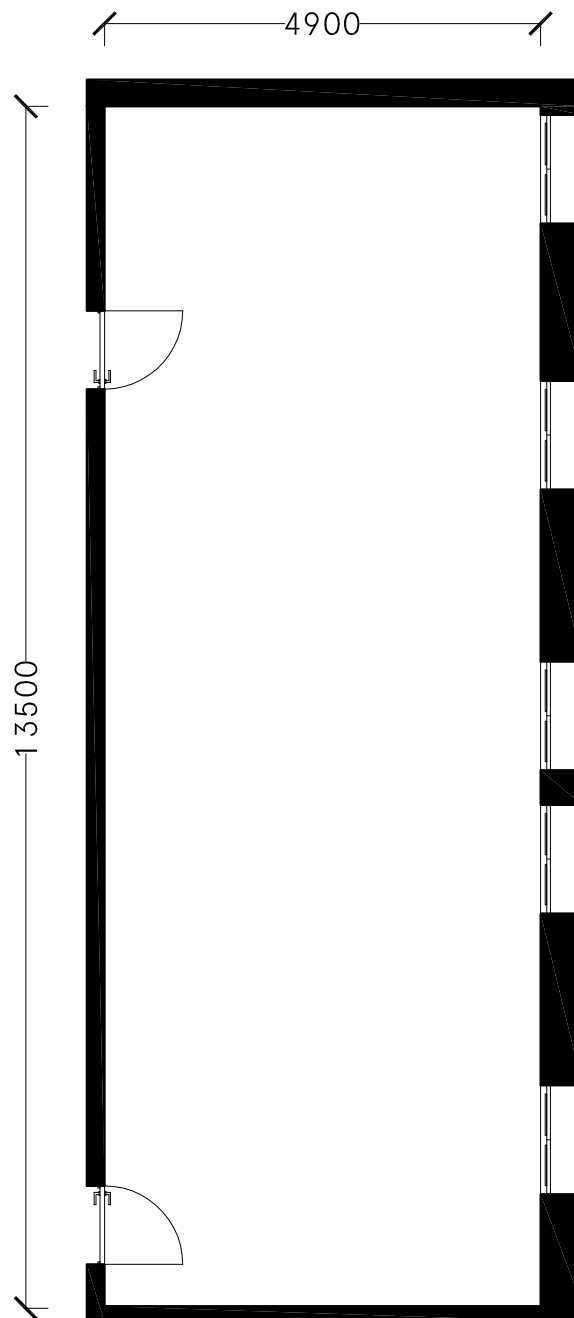
Piso de danza permanente
Capacidad para 60 personas
Altura 7,30 mts.

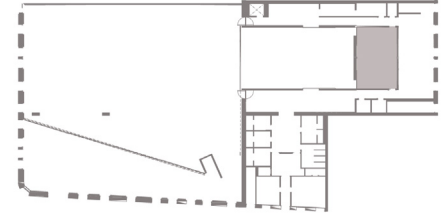




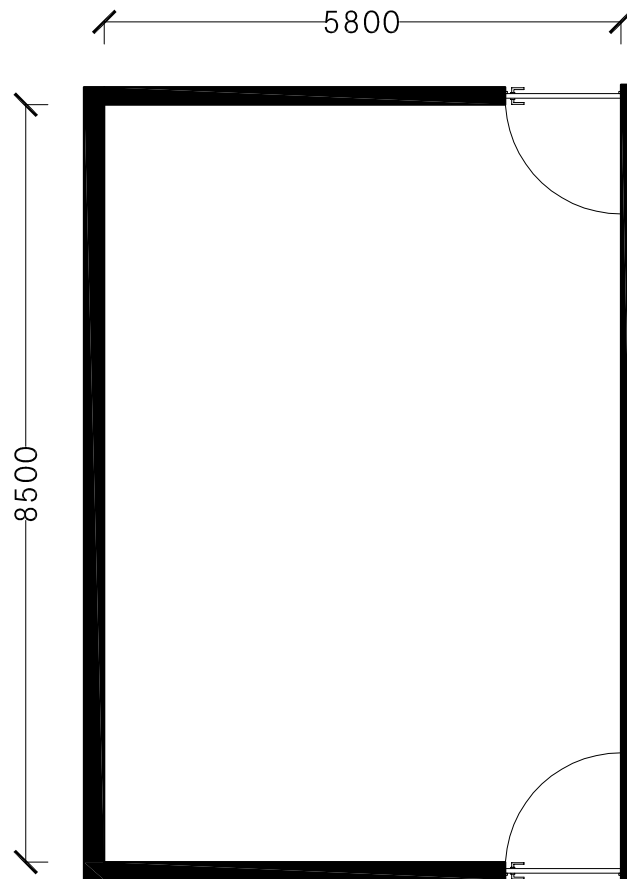
Sala 1

Piso de madera
Altura 4 mts.





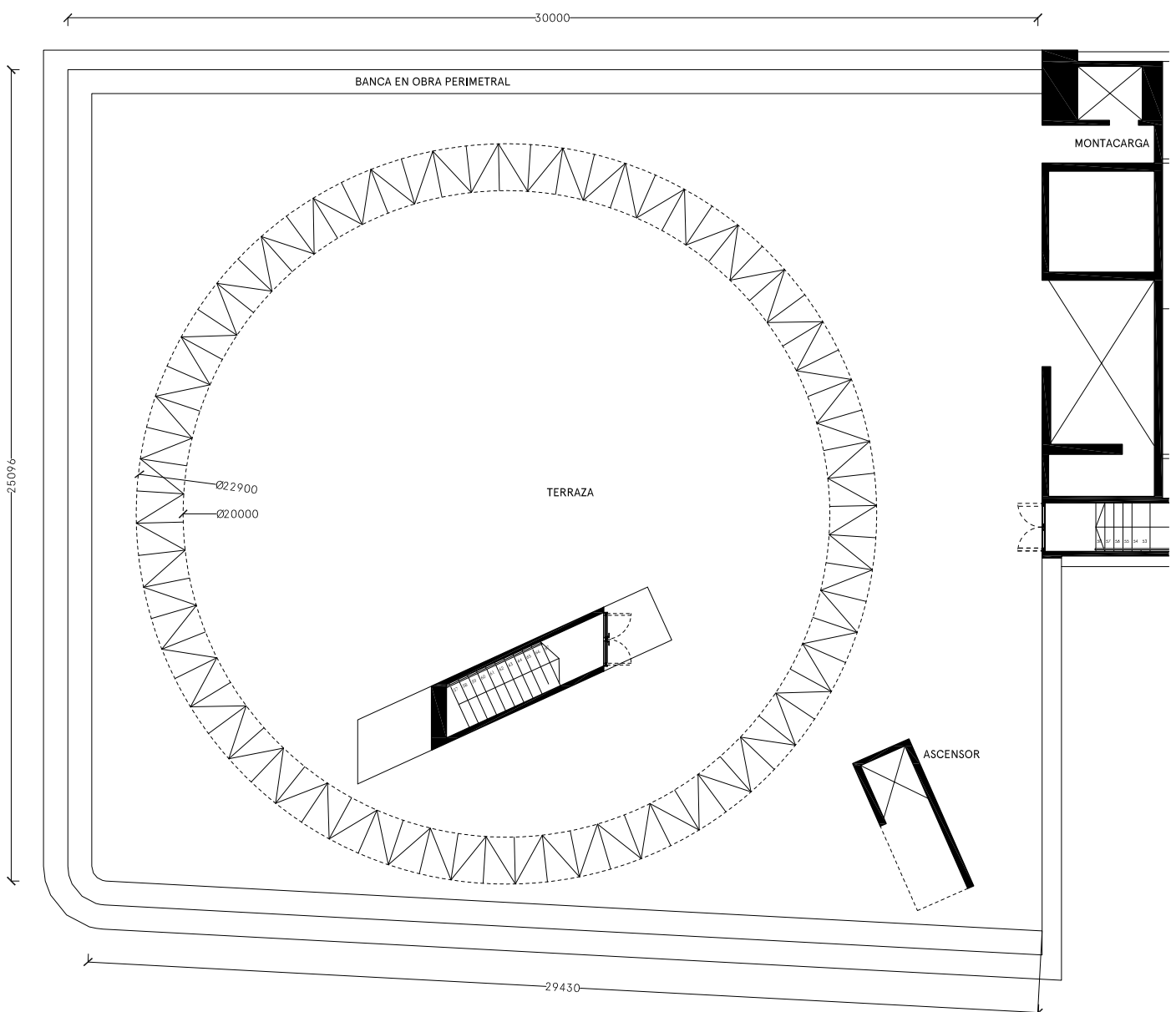
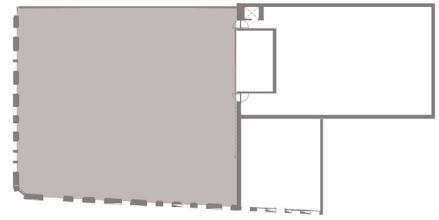
Sala 2
Piso de madera
Altura 4 mts.



Azotea

Instalación carpa de circo

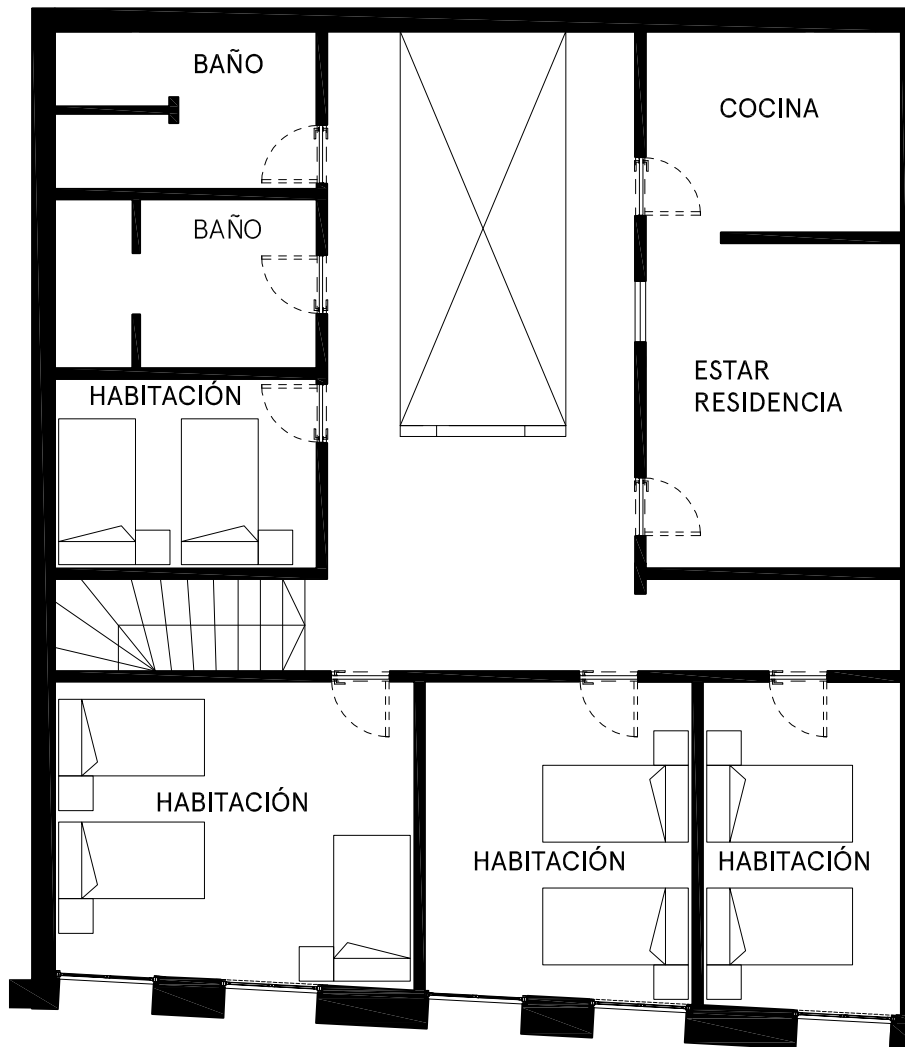
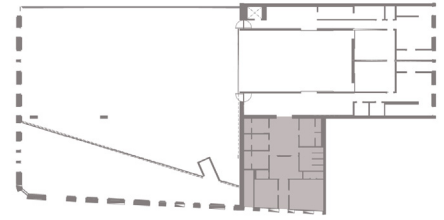
Capacidad para 200 personas

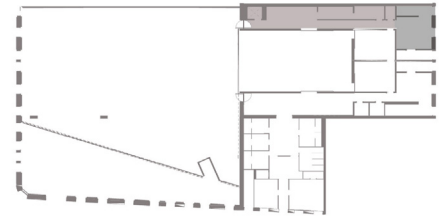


Residencia

Piso de madera

Altura 4 mts.





Ala Catering

- Acceso independiente por el pasaje Santa Marta
- Montacargas con acceso a todos los niveles del edificio
- Extractores, agua caliente y espacio para montar una cocina
- Dos niveles disponibles
- Espacio de montaje
- Baños y duchas para personal
- No cuenta con gas ni hornos
- Pieza independiente para basura

